



Centra voor Basiseducatie

Bringing Vision to Life

The Reflection Tool of Ligo

Sulotta De Clercq

19th June 2025



What is Ligo?

- 13 centers in Flanders & Brussels
- 1 federation who supports the 13 centers

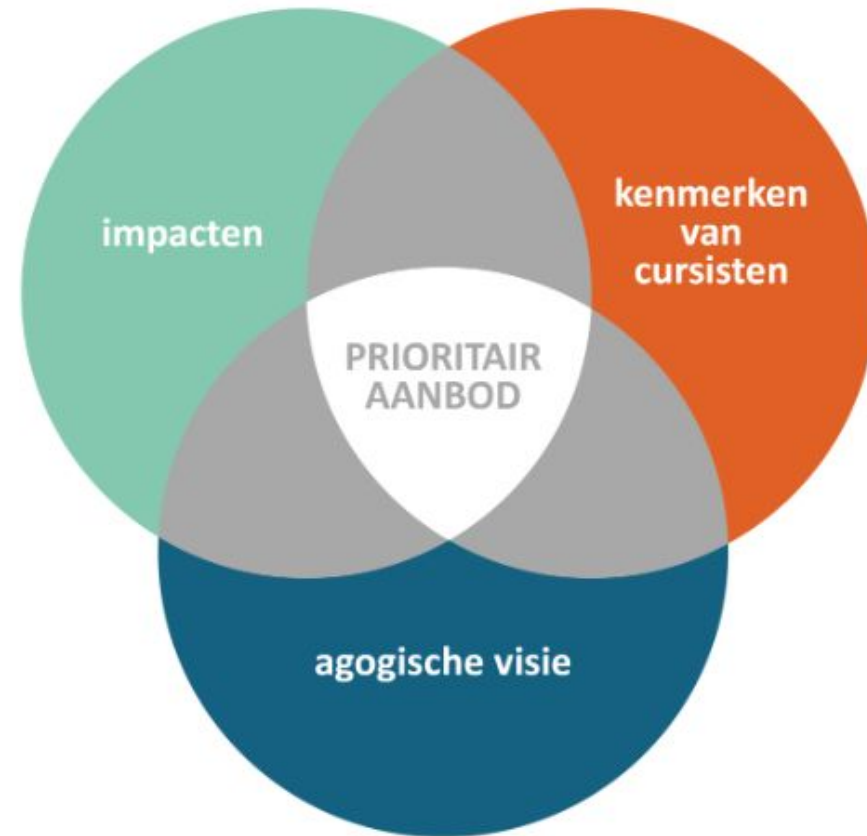
⇒ We are a network and want to achieve impact for all our students.

- focus on a few target groups, e.g.: parents of young children, job seekers, illiterate people, people in detention centers, ...
- by teaching according to our agological vision (focus on functional & integrated learning)



Agogical vision

Which effect?

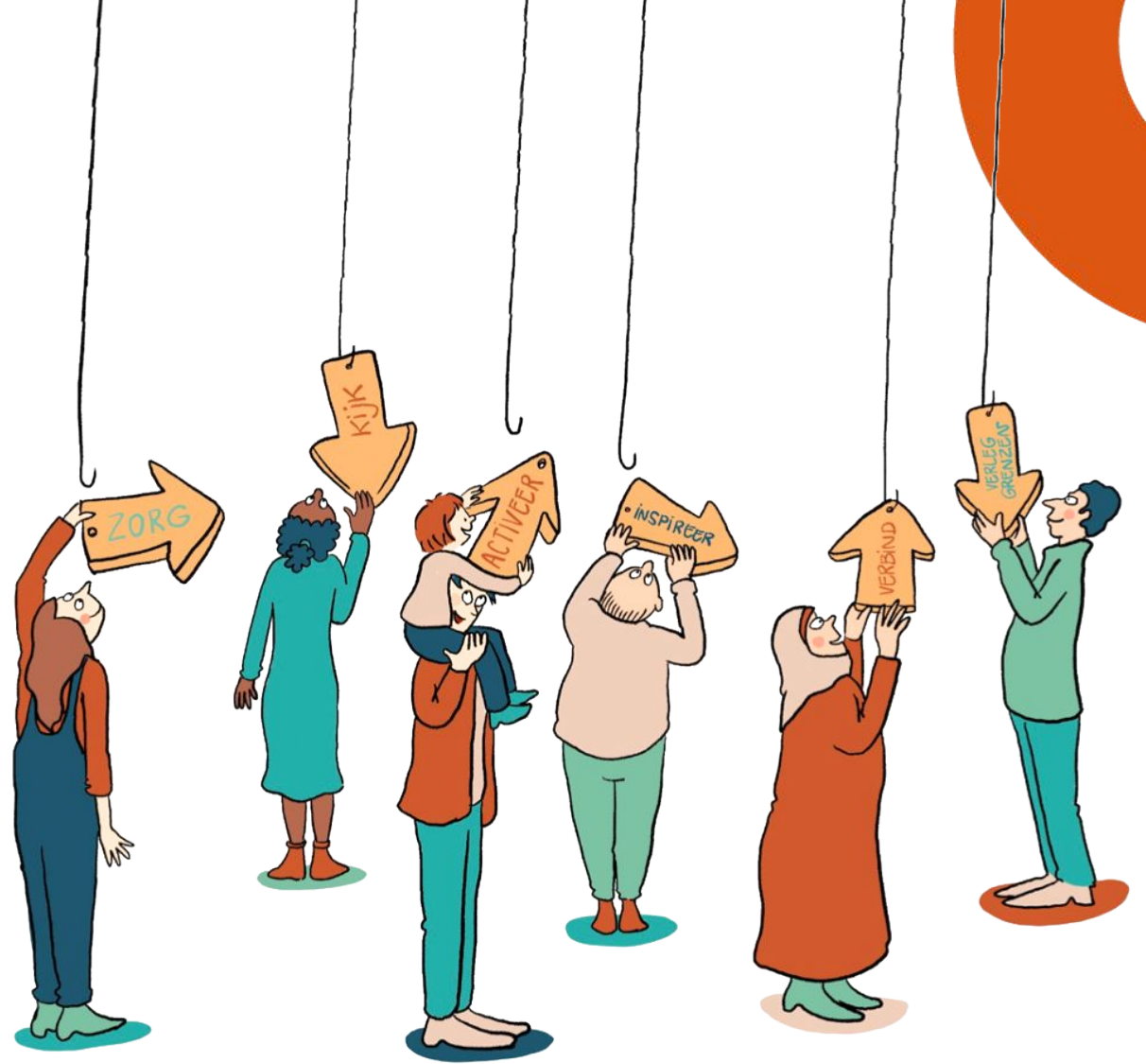


For who?

How do we do it?

6 pillars

1. looking
2. inspiring
3. activating
4. caring
5. pushing boundaries
6. connecting



“Constructivism is a bad counselor” - P. Kirschner

Critics from teachers

- vision is too abstract
- there's no room for specific courses

Critics from literature

- philosophy of constructivism is not a pedagogy or a didactics for teaching
- students need to learn with explicit instruction

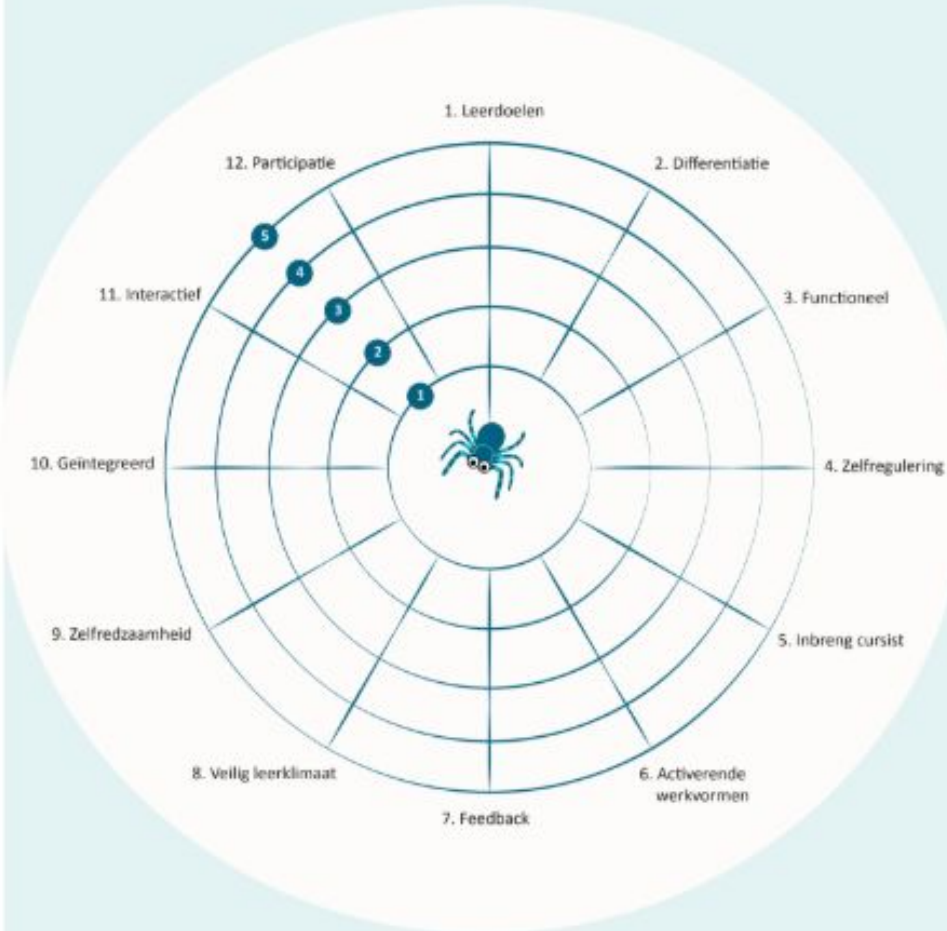


Reflection tool as quickscan

1. Teachers read a statement
2. Teachers scale themselves: I don't do it > I do this always
3. Teachers connect the dots
4. Teachers can read more on our Communication Platform:
 - a. specific practices in Ligo
 - b. some background literature

Quickscan

Gebruik dit spinnenweb na een les of lessenreeks. Duid per stelling aan waar je jezelf ziet. Verbind nadien alle stippen met elkaar. Je kan dit spinnenweb meermaals gebruiken.

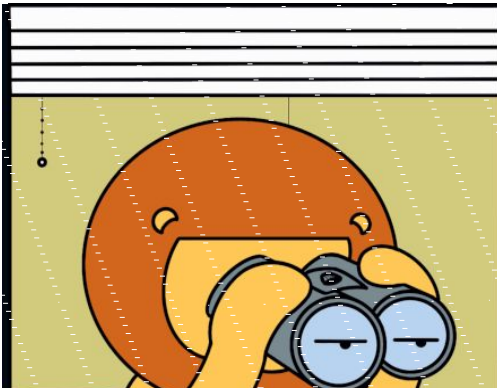


Inschattingniveau

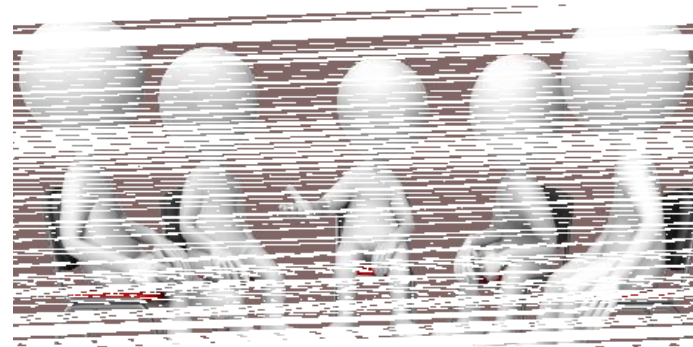
1. doe ik niet
2. doe ik zelden
3. doe ik soms
4. doe ik regelmatig
5. doe ik altijd

3 professionalisation initiatives

Observation



Intervision



Reflection tables



Question for the audience

How can we balance functional and authentic learning with the need for explicit instruction (e.g. in grammar or reading the clock)?





Centra voor Basiseducatie

sulotta.declercq@ligo.be